

VISION 型材锁芯



用于 Vision 把手的型材锁芯。半边锁芯已通过 DIN EN 1303 和 DIN 18252 标准认证。该锁芯有 40 和 45 毫米两种长度，由黄铜制成，凸轮可 360° 旋转，并且可连续调整 8 个 45°（8 位调整）。

锁芯随附三把钥匙。



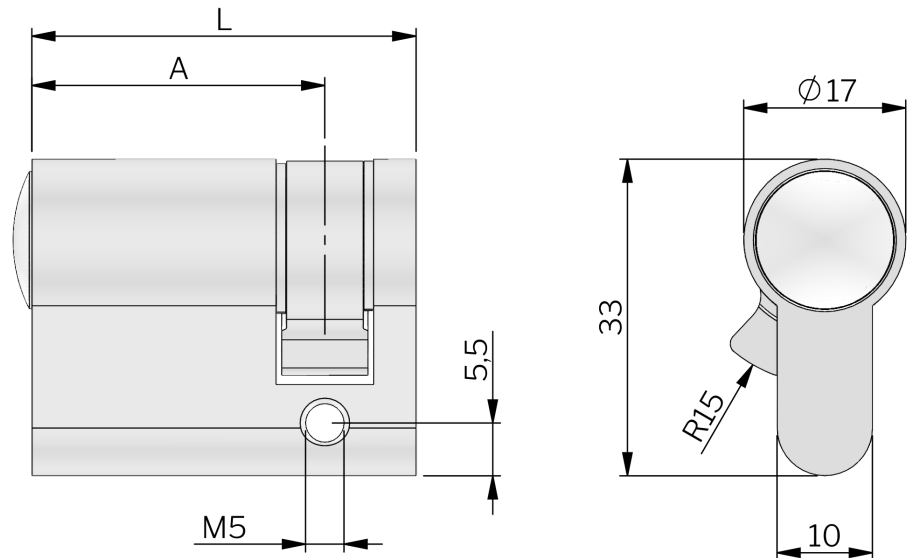
相关产品

类似产品: 1-210

索引编号见网站 industrilas.com

TESTS & STANDARDS

For full system description of cylinder and key technology, see Technical specification below the product table.



Technical specifications

System description of cylinder / key technology

- Locking side has 5 spring-loaded, solid tumblers, axially arranged.
- Consists of 10 sectionally arranged core- and body pins with “waist”.
- Solid pin tumblers with a minimum diameter of 3 mm, made from tempered bronze/steel.
- Nickel plated hardened steel core pins and housing pins.
- One-piece solid brass cylinder housing, with a multi-layer galvanized surface treatment for higher corrosion protection.
- One-piece solid brass cylinder core with a minimum diameter of 13 mm.
- Convex core head with guide funnel and core head groove for positive torque-transfer when opening and closing.
- Supplied with 3 reversible keys from nickel-silver for added corrosion- and wear-resistance.
- Horizontal keyhole.
- Cam adjustable in increments of 45° and made from one piece of sintered steel.
- Spare parts available for min. 25 years.

Other systems available on request

- Locking Type Z / ZHS / HS / GHS with security card.
- Coded individual locking with security card.
- Locking systems VdS 2156 class A, B, B+ possible.
- Systems with technical copy protection, mobile elements in the key, optionally with increased drilling- and/or impact- and pulling protection.
- Profile double cylinder with and without knob, cam cylinders, padlocks, mechatronic or electromechanical locking system.